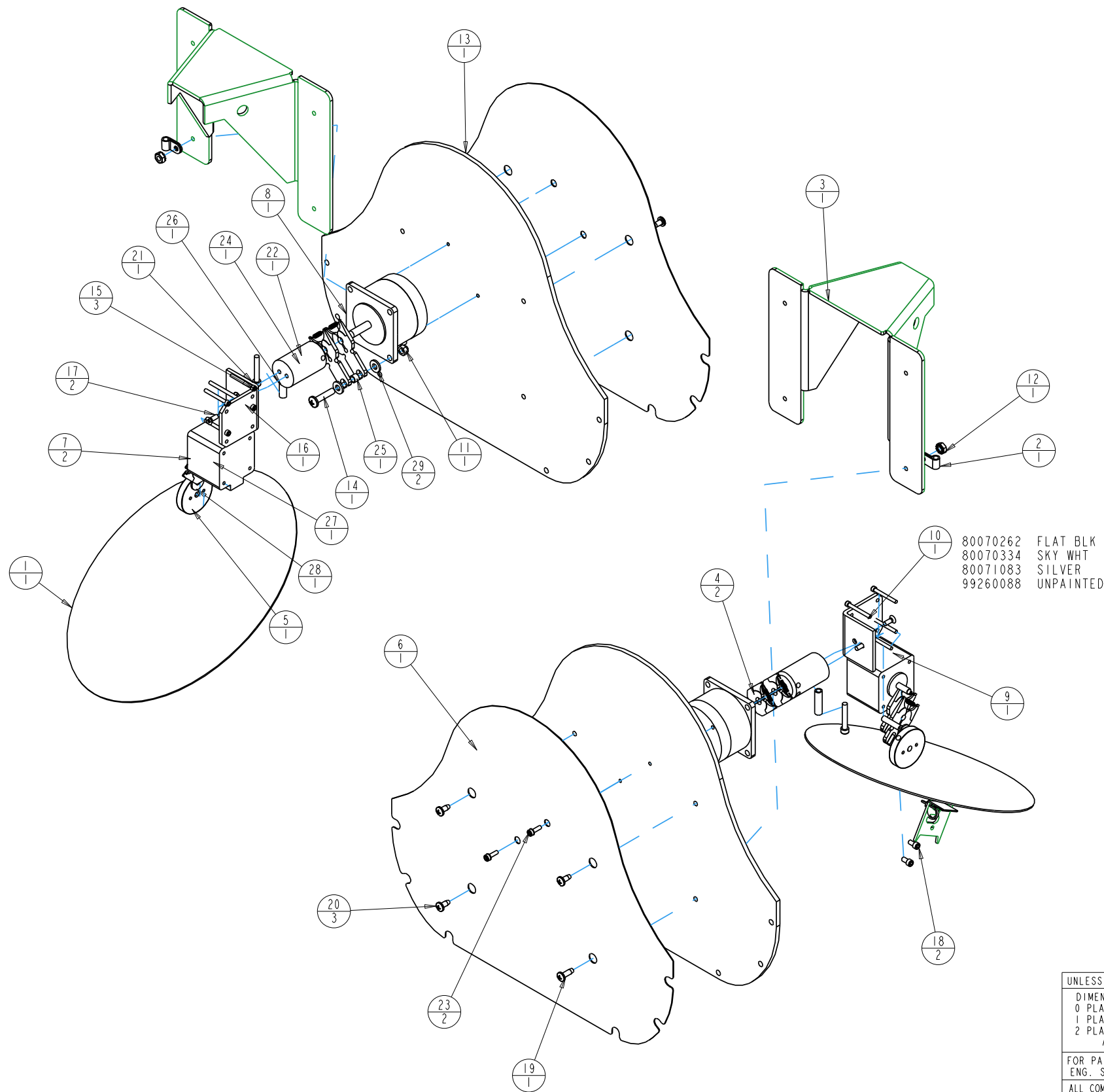


REV.	DESCRIPTION	DATE	ENG	ECO #	APPR
1	CREATE DRAWING	13JUL09	PP		
2	ADD MISSING HARDWARE	17JUL09	PP		
3	ADD 1X 90709186, 90703011, 90702135 ADD 2X 90706012	06OCT09	PP		
4	ADD INFO: ELLIPTICAL MIRROR + SL113 MIRROR MNT	27OCT09	LR		
5	REV CHANGE TO ITEM 13	30NOV09	PP		



80070262 FLAT BLK  
80070334 SKY WHT  
80071083 SILVER  
99260088 UNPAINTED

ITEM NO.	QTY.	FILENAME	PART NO.	REV	DESCRIPTION
29	2	WASHER10-204X440SS	90706012	.	WASHER,FLAT #10 SS
28	1	SPI32	90706083	A	WASHER, THRUST, OPTICAL MODULE ASSY
27	1	STANDOFF188RND750	90702036	-	STANDOFF, 3/16R X 3/4L F 4-40 THR SBZ
26	1	SPACER250RND750	90702024	-	SPACER, 1/4 R X 3/4L IN CPBC GREY #8 THRU
25	1	SPACER250RND188	90702135	.	SPACER, .188 x 3/16 ID, 1/4 OD
24	1	SL051	99260397	A	SHAFT, MIRROR DOUBLE BRAKE, CYBERLIGHT
23	2	SCREWM3AC10BZ	91000310	.	SCREW,M3 SOCKET CAP 10 BZ SEMS
22	1	SCREW8-32AC500BZP	90707031	.	SCREW,8-32 SOCKET CAP 1/2 BZ PATCH
21	1	SCREW8-32AC100P	90707039	.	SCREW,8-32 SOCKET CAP 1 ALLOY ZN PATCH
20	3	SCREW8-32PP380TL-BZ	90709046	.	SCREW,8-32 PHIL PAN 3/8 TAPTITE BZ & BK
19	1	SCREW8-32PP500TL-BZ	90709064	.	SCREW,8-32 PHIL PAN 1/2 TAPTITE 11 BZ
18	2	SCREW6-32AC250BZP	90707045	.	SCREW,6-32 SOCKET CAP 1/4 BZ PATCH
17	2	SCREW6-32PF0375BZP	90711005	.	SCREW,6-32 PHIL FLAT 3/8 BZ PATCH
16	1	SCREW4-40AC2000BZ	90707009	.	SCREW,4-40 SOCKET CAP 2.0 BZ
15	3	SCREW4-40AC1000BZ	90707066	.	SCREW,4-40 SOCKET CAP 1.0 BZ
14	1	SCREW10-32PP780W-SS	90709186	.	SCREW,10-32 PHIL PAN 7/8 MS BZ
13	1	CL142	80070563	B	PLT, HEAD, MIRROR MOUNT
12	1	NUT8-32KEP	90703023	.	NUT,8-32 KEPS NUT SZ
11	1	NUT10-32LOCK	90703011	.	NUT, LOCK 10-32 NYLON INSERT SZ
10	1	SL113	CHARTED	E	MOUNT,MOTOR TILT PAINTED 1B,TS,CL,CX
9	1	MR109_02	99270070	B	MOTOR, STEP 2PH S17 02V ALNICO NMB
8	1	MR004_1	99270020	.	MOTOR, STEP 2P S23 09V SHAFT NMB
7	2	TB375	80140021	-	MOTOR BRAKE ASSEMBLY
6	1	CL453	99310530	-	LABEL, MIRROR HEAD
5	1	SL260	99400070	-	HUB, MIRROR MOUNT, MOTOR BRAKE CL
4	2	SLA012	80140033	-	DAMPER, ASSY, MTR BRAKE .250 SHAFT, CL
3	1	CL163	80070573	-	COVER, PAN MOTOR
2	1	CLAMP_188_NY	90410023	.	CLAMP, 3/16 NYLON CABLE CLAMP BLACK
1	1	SL195	80580012	B	ASSY,ELLIPTICAL MIRROR W/ MOUNT CL/CX

**UNLESS OTHERWISE SPECIFIED**

**DIMENSIONAL TOLERANCES:**  
 0 PLACE DECIMAL = ±0.38  
 1 PLACE DECIMAL = ±0.25  
 2 PLACE DECIMALS = ±0.13  
 ANGLES = ±0.5°

**FOR PAINTED PARTS REFER TO ENG. SPEC. MANUAL W1-0592**

**ALL COMPONENTS, MATERIALS AND FINISHES TO BE RoHS COMPLIANT**

**RELEASE DATE:** \_\_\_\_\_

**CE:** \_\_\_\_\_

**ENG:** \_\_\_\_\_

**ME:** \_\_\_\_\_

**MFG:** \_\_\_\_\_

**DRW:** \_\_\_\_\_

**DESCRIPTION:**  
HEAD, MIRROR, PAN AND TILT ASM

**MATERIAL:**  
CHARTED

**FINISH:**  
NA

**MIN. DRAFT** \_\_\_\_\_

**MIN. RADII** \_\_\_\_\_

**FLATNESS** \_\_\_\_\_

**THICKNESS** \_\_\_\_\_

**VOLUME** \_\_\_\_\_

**INTERPRET DIMENSIONS PER ASME Y14.5M-1994**

**THIRD ANGLE PROJECTION**

**DIMENSIONS ARE IN MILLIMETERS**

**SI METRIC A1**

**PART NO. INTERNAL**

**DRAWING NO. CLA034**

**REV. 5**

**DO NOT SCALE** SCALE: 0.333

**SHEET: 1 OF 1**

**PROPRIETARY NOTICE:**  
 THIS DOCUMENT CONTAINS CONFIDENTIAL AND PROPRIETARY INFORMATION OF HIGH END SYSTEMS INC., (ALSO DBA LIGHTWAVE RESEARCH) AND IS GIVEN TO THE RECEIVER IN CONFIDENCE. THE RECEIVER ACCEPTS AND AGREES THAT, EXCEPT AS AUTHORIZED BY HIGH END SYSTEMS, THE RECEIVER WILL NOT PERMIT THE USE OF THE DOCUMENT OR ANY COPY THEREOF OR THE INFORMATION THEREIN, WILL NOT COPY OR PERMIT COPYING THE DOCUMENT WILL NOT DISCLOSE TO OTHERS EITHER THE DOCUMENT OR THE INFORMATION THEREIN, AND WILL UPON COMPLETION OF THE NEED TO RETAIN THE DOCUMENT, OR UPON DEMAND, RETURN THE DOCUMENT WITHOUT RETAINING ANY OF THE INFORMATION CONTAINED THEREIN IN ANY FORM WHATSOEVER.